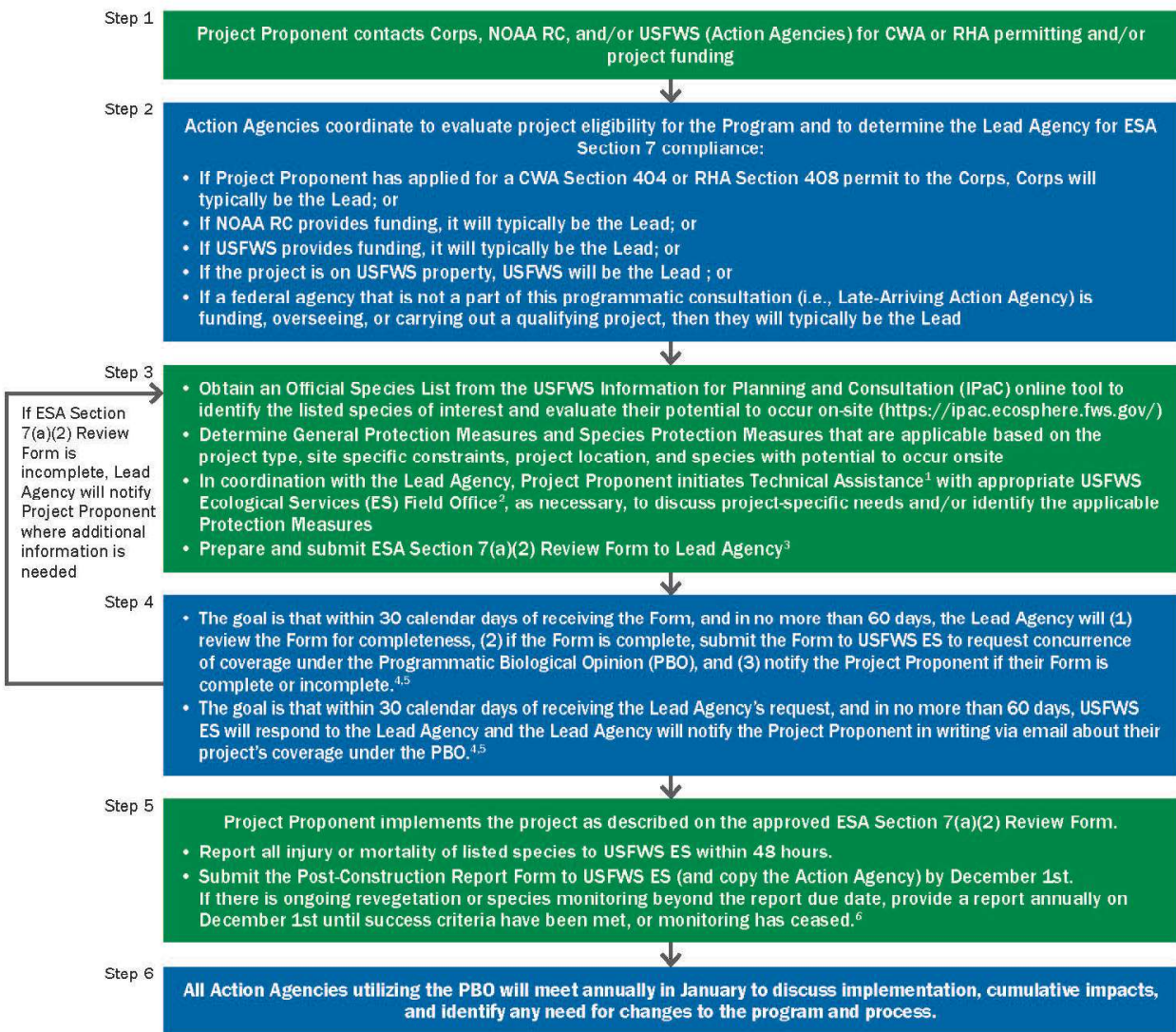


**Figure 2: Administration Flow Chart**

June 2022

**Figure 2 – Program Administration for ESA Section 7 Compliance with USFWS**



ACRONYMS	
Corps	United States Army Corps of Engineers
CWA	Clean Water Act
ES	Ecological Services Program
ESA	Endangered Species Act
IPaC	Information for Planning and Consultation
NOAA RC	National Oceanic and Atmospheric Administration Restoration Center
PBO	Programmatic Biological Opinion
RHA	Rivers and Harbors Act
USFWS	United States Fish and Wildlife Service

LEGEND	
<span style="display:inline-block; width:15px; height:10px; background-color:green; border:1px solid black;"></span>	Action to be completed by Project Proponent
<span style="display:inline-block; width:15px; height:10px; background-color:blue; border:1px solid black;"></span>	Action to be completed by Action Agencies

1. Technical Assistance may include a variety of coordination steps, such as discussions with the Project Proponent, coordination with the Action Agencies and USFWS ES, a field visit to the project site.
2. The appropriate USFWS ES Field Office is based on the location of the Proposed Project. See Figure 1.
3. Ideally, the Project Proponent will submit the completed ESA Section 7(a)(2) Review Form and the Clean Water Act permit application concurrently. USFWS Programs have delegated Section 7(a)(2) authority and will serve the role of USFWS ES for their respective projects.
4. Project Proponent may not implement their project until all applicable federal, state, and local permits are obtained.
5. Written concurrence (i.e., electronically signed ESA Section 7(a)(2) Review Form package) via email from USFWS ES is required for the project to be covered under the PBO. Response times will depend upon the nature of the project and the amount of coordination that has occurred prior to submitting the ESA Section 7(a)(2) Review Form.
6. All revegetated areas will be maintained and monitored for a minimum of 2 years after replanting is complete, or until success criteria are met, to ensure that the revegetation effort is successful. The standard for success is 60% cover compared to pre-project conditions at the project site or at least 60% cover compared to an intact, local reference site. If an appropriate reference site or pre-project conditions cannot be identified, success criteria will be developed for review and approval on a project-by-project basis, based on the specific habitat impacted and known recovery times for that habitat and geography.